

# INSTRUCTION MANUAL OF ARTICULATORS AND FACEBOWS



CE

 bio·art



## ► 1 - INTRODUCTION ◀

**Attention:** Before using your Bio-Art Articulator, please read the entire instruction manual carefully.

The Articulator is an instrument used to simulate the patient's maxillo-mandibular relationships and movements in the laboratory, with the aim of studying occlusion and making devices that will later be used by the patient. Examples: complete dentures, fixed partial dentures, removable partial dentures, bite plates (bruxism) and others.

The Facial Arch is an instrument used to record the spatial position of the patient's upper dental arch in relation to the skull and transfer this record to the articulator.

Bio-Art semi-adjustable articulators are conventional Arcon-type instruments (models 4000-S, A7 Plus and A7 Fix). Therefore, the technical assembly procedures are the same for these articulators.

**Attention:** The articulator and facial arch are products intended for use by qualified professionals only. Use of the device by untrained professionals can cause damage to the product itself and/or to the patient.

It is important to note that the semi-adjustable articulator and the Bio-Art facial arch offer a simple and quick process for reproducing mandibular movements, with a high level of precision at a low cost, when compared to techniques that involve considerable time consumption and the use of expensive and complex equipment or work carried out with simple "occluders" (hinges), where the assembly of the models is arbitrary and the movements limited.

We concluded that the use of a semi-adjustable articulator and facial arch is recommended for most prosthetic, occlusion and orthodontic work, among others, and is a simple, quick and easy technique that guarantees both the patient and the professional a very satisfactory result.

In the event of any serious incident occurring in relation to the device, the user and/or patient must notify Bio-Art Equipamentos Odontológicos Ltda and the competent authority in their country.

## ► 2 - SAFETY PRESCRIPTIONS ◀

- This manual contains only basic and simplified information on the use of the appliance, which does not replace the appropriate occlusion and/or prosthetics course offered in many educational institutions and dental schools as a compulsory subject.
- Bio-Art facial arches are designed to be used with Bio-Art articulators and vice versa.
- Bio-Art articulators do not offer interchangeability, i.e. dental arch models mounted on one articulator must not be transferred (mounted) to any other articulator. Therefore, Bio-Art does not guarantee accuracy for this procedure with these articulators.
- For the interchangeability of mounted dental arch models between Bio-Art articulators, we offer the standardization feature (factory calibration) for the A7Plus and A7Fix types, allowing models to be transferred between these articulators.

- Before using the articulator and facial arch, professionals should check that the appliance has not been damaged and that there are no distortions in the incisal pin, parallelism of the arch, centricity of the incisal pin in relation to the lower ramus, etc. If there are any abnormalities, you should then contact Bio-Art Technical Assistance or an Authorized Representative.
- Before using the facial arch, it should be cleaned with warm water, the fork sterilized in an autoclave and the auricles disinfected with a bactericidal wipe or 70° alcohol.
- Bio-Art only recommends warm water for general cleaning of the articulator and facial arch.

The articulator is a precision device that must be handled, transported and stored with care. To ensure this precision, Bio-Art has designed an exclusive plastic case to accommodate it and make it easy to transport.

### ► 3 - SERIOUS INCIDENT ◀

User/patient, please report any serious incident occurring in relation to this device to Bio-Art Equipamentos Odontológicos Ltda. and to the competent authority in your country.

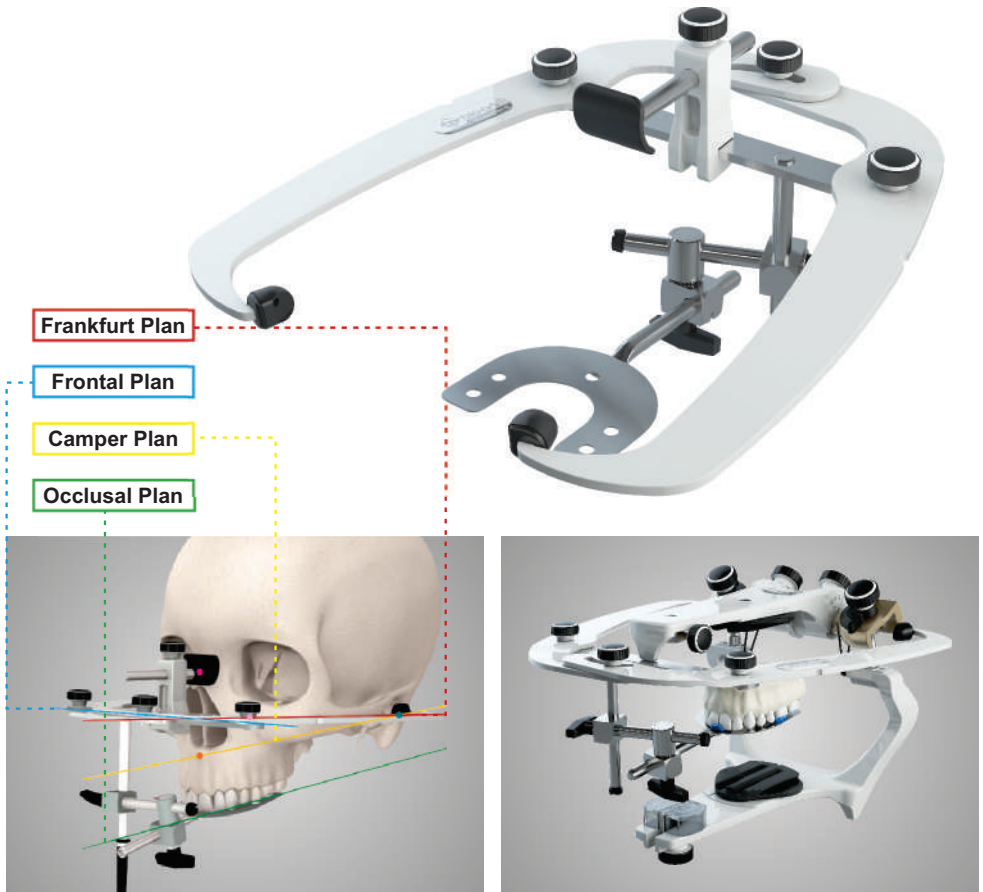
### ► 4 - PARTICULARITIES OF THE BIO-ART ARTICULATORS

- Interchangeable joints (optional)
- The interchangeable articulators are supplied standardized (factory calibrated), so that the plaster models can be interchanged (transferred) between these articulators. Only the 4000-S model cannot be supplied standardized.

Modelo	4000-S	A7 Fix	A7 Plus
<b>Characteristics</b>			
Classification	Arcon	Arcon	Arcon
Condyllic Guide	Adjustable / Curved	Curved Fixed at 30°	Adjustable / Curved
Bennet's angle	Adjustable	Fixed at 15°	Adjustable
Intercondylar distance	Adjustable*	Fixed at 110mm	Fixed at 110mm
Centric lock	No	Sim	Sim
Stabilizer system**	O-ring Side Joint	Magnetic Side Joint	Silicone Side Joint



## ► 5 - PARTICULAR FEATURES OF THE STANDARD FACEBOW



The Standard Facial Arch is a simple and easy-to-use model (conventional system). It has hand-tightening butterfly nuts for fixing the fork, eliminating the inconvenience caused by using wrenches (fig.1).

In this model, the position of the patient's upper arch in relation to the skull is transferred by attaching the complete facial arch to the upper branch of the articulator (Figs. 2 and 3).

The Standard Facial Arch is suitable for most Bio-Art articulator models.

## ► 6 - PARTICULARITIES OF THE ELITE FACEBOW ◀



The Elite Facial Arch has an articulation and fork fixation system that enables faster registration for the professional and more comfortable registration for the patient (figs. 1 and 2), as well as a transfer set that eliminates the need for the arch in the process of assembling the models in the articulator, making this process more practical and stable (fig. 3).

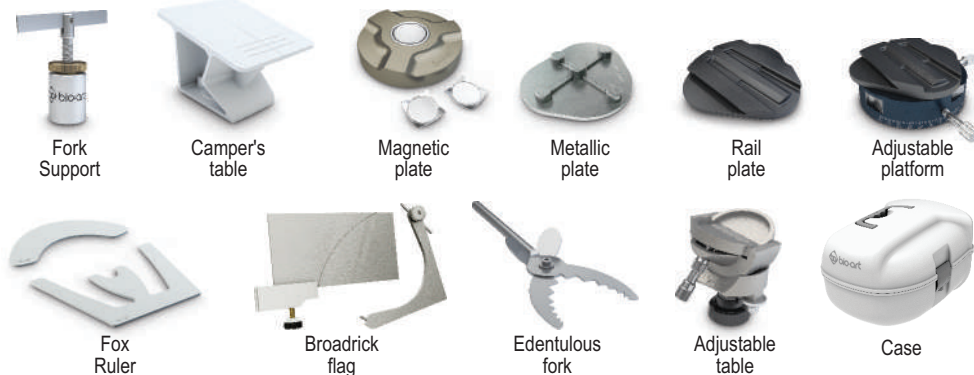


Its Naziun height-adjustable dial and infra-orbital indicator make registration even more precise.

This model is equipped with a smooth sliding system (opening and closing) which makes it easier to handle. Its auricles are anatomical, removable and autoclavable.

The Elite Facial Arch is suitable for most Bio-Art articulator models.

## 7 - ACESSORIES



## 8 - TECHNICAL ASSISTANCE

For your safety, this product should be serviced by authorized persons / companies. Check the Authorized Technical Assistance centers on our website: <http://www.bioart.com.br>

## 9 - WARRANTY TERM

BIO-ART Equipamentos Odontológico Ltda., grants a 1-year warranty, counted from the date of purchase of the product (purchase invoice). The warranty is provided exclusively by the authorized distributor and includes any manufacturing defects, and is provided upon repair of the product and subject to the following requirements:

- That the product has been used correctly according to the instructions described in the instruction manual;
- The complaint must be accompanied by the purchase invoice and registered within the warranty period, followed by a report with a description of the defect and product serial number;
- The product is used, transported and stored with care;
- The transportation cost (round trip) is paid by the customer;

### Warranty limitations:

- Natural wear of parts;
- Misuse, falls or accidents;
- Improper transportation;
- Repair by unauthorized persons;
- Use in non-compliance with the product's characteristics and purposes;
- Wear by exposure to adverse conditions (humidity, intense cold and heat);
- Damage due to lack of cleaning or maintenance with inappropriate products;

### In case of doubts, refer to the manufacturer:

BIO-ART EQUIPAMENTOS ODONTOLÓGICOS LTDA.

Rua Teotônio Vilela, 120 - Jardim Tangará

CEP 13568-000 - São Carlos - SP - Brazil

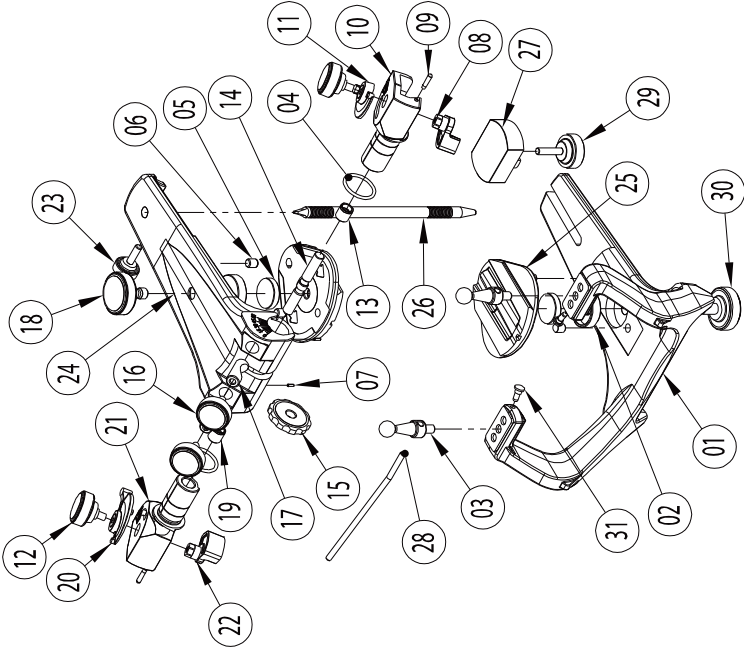
Tel. +55 (16) 3371-6502 - Fax +55 (16) 3372-5953

website: [www.bioart.com.br](http://www.bioart.com.br) - E-mail: [bioart@bioart.com.br](mailto:bioart@bioart.com.br)

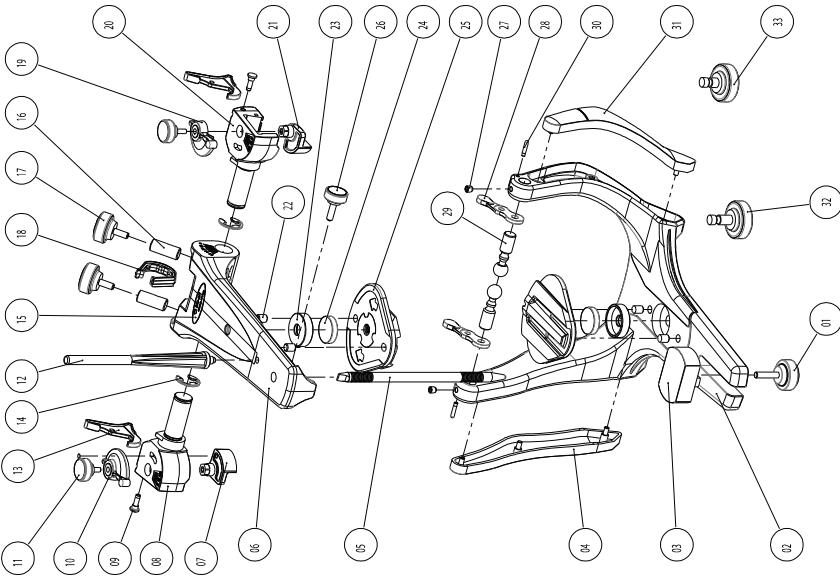
CNPJ 58.538.372/0001-56 - I.E. 637.034.447.113

# 10 - 4000-S ARTICULATOR - PARTS LIST

Item	Code	Qty	Description of Components
1	FRAM1069	1	4000-S LOWER BRANCH
2	FCAN0755	2	MAGNET HOUSING CUP
3	FECDO049	2	CONDYLAR ELEMENT
4	CORI1170	2	STABILIZER SPRING
5	CIMA1118	2	MOUNTING PLATE FIXING MAGNET
6	CPG0782	4	MOUNTING GUIDE PIN
7	CPIE1524	2	ELASTIC PIN
8	SALH0075	1	CURVED PLASTIC RIGHT FIN
9	CPG0781	2	ARCH GUIDE PIN
10	FCDL1066	1	4000-S RIGHT CONDYLAR GUIDE
11	CPOS1581	1	RIGHT VANE POSITIONER
12	SCRE0099	2	VANE FIXING SCREW
13	CBCH0785	1	RIGHT BUSHING
14	FFUS0042	1	CONDYLAR EXPANSION SPINDLE
15	FRLD0061	1	EXPANDER SPINDLE PULLEY
16	SCRE0008	2	SCREW FIXING THE CONDYLAR GUIDE
17	CFIX0780	2	CONDYLAR FASTENER
18	SCRE0010	1	FIXING SCREW FOR THE TOP MOUNTING PLATE
19	CBCH0786	1	LEFT BUSHING
20	CPOS1580	1	LEFT VANE POSITIONER
21	FCDL1067	1	4000-S LEFT CONDYLAR GUIDE
22	SALH0074	1	PLASTIC LEFT FIN WITH CURVATURE
23	SCRE0011	1	INCISAL PIN FIXING SCREW
24	FRAM0056	1	4000-S UPPER BRANCH
25	SPLA0079	4	RAIL PLATE
26	FPIN0053	1	INCISAL PIN
27	CMES1537	1	STANDARD INCISAL TABLE (POLYCARBONATE)
28	FHST0058	1	CONDYLAR ELEMENT KEY
29	SCRE0078	1	FIXING SCREW FOR THE INCISAL TABLE
30	SCRE0082	1	FIXING SCREW FOR THE BOTTOM MOUNTING PLATE
31	FPIN0744	2	STABILIZER ELASTIC PIN



## 11 - A7PLUS ARTICULATOR - PARTS LIST



ITEM	QT	CÓDIGO	DESCRIÇÃO
01	01	SCRE0078	FIXING SCREW FOR THE INCISAL TABLE
02	01	FRAM0731	A7 LOWER BRANCH
03	01	FMES0063	STANDARD INCISAL TABLE (POLYCARBONATE)
04	01	FTAP0761	RIGHT COLUMN FINISHING CAP
05	01	FPIN0053	INCISAL PIN
06	01	FRAM0740	UPPER BRANCH
07	01	SAL-H0075	RIGHT VANE
08	01	SGUI0073	RIGHT CONDYLAR GUIDE
09	02	FPIN0744	STABILIZER ELASTIC PIN
10	01	FPOS0759	RIGHT VANE POSITION INDICATOR
11	02	FPAR0742	VANE FIXING SCREW
12	01	FPIN0743	UPPER BRANCH SUPPORT PIN
13	02	FTRA0765	UPPER BRANCH LOCK
14	02	CANE0319	CONDYLAR GUIDE LOCK-RING
15	01	CETQ1113	MODEL IDENTIFICATION TAG
16	02	FFIX0766	CONDYLAR GUIDE FASTENER
17	02	SCRE0008	FIXING SCREW FOR THE CONDYLAR GUIDE
18	01	FTAP0764	PULLEY SLOT FINISHING CAP
19	01	FPOS0758	LEFT VANE POSITION INDICATOR
20	01	SGUI0072	LEFT CONDYLAR GUIDE
21	01	SAL-H0074	LEFT VANE
22	04	FPIG0076	MOUNTING PLATE GUIDE PIN
23	02	FCAN0755	MAGNET CUP
24	02	GIMA1118	MOUNTING PLATE FIXING MAGNET
25	02	SPLA0079	RAIL ASSEMBLY PLATE
26	01	SCRE0011	FIXING SCREW FOR THE INCISAL PIN
27	02	CPAR1119	CONDYLAR ELEMENT LOCK SCREW
28	02	GMOL1100	SIDE JOINT (SILICONE)
29	02	FECD0754	CONDYLAR ELEMENT
30	02	FPIG0062	ARCH GUIDE PIN
31	01	FTAP0760	LEFT COLUMN FINISHING CAP
32	01	SCRE0082	FIXING SCREW FOR THE BOTTOM MOUNTING PLATE
33	01	SCRE0010	FIXING SCREW FOR THE TOP MOUNTING PLATE

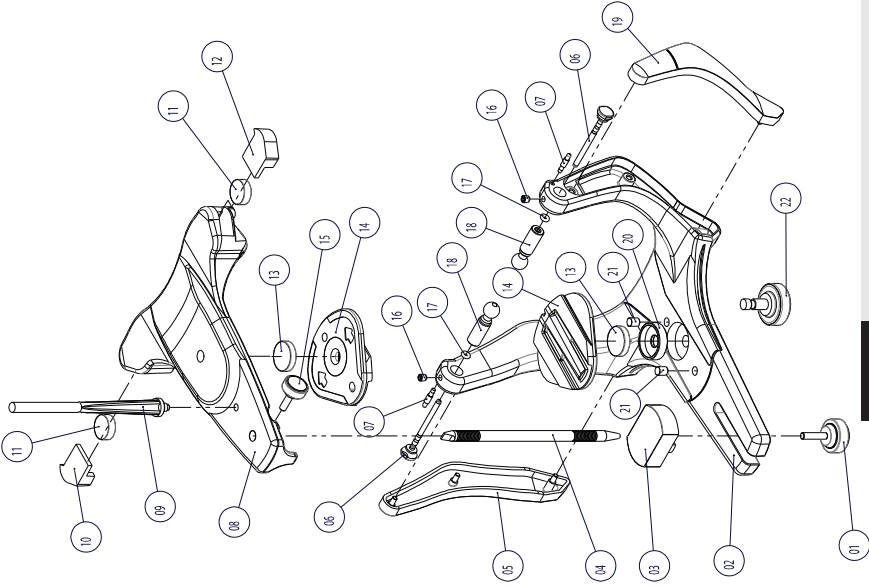
\*THE STANDARDIZED ARTICULATORS ONLY COME WITH 1 SCREW.

\*\*THE MAGNETIC PLATES ARE NOT COMPATIBLE WITH THE STANDARDIZED ARTICULATOR.

**NOTE**



## 12 - A7FIX ARTICULATOR - PARTS LIST



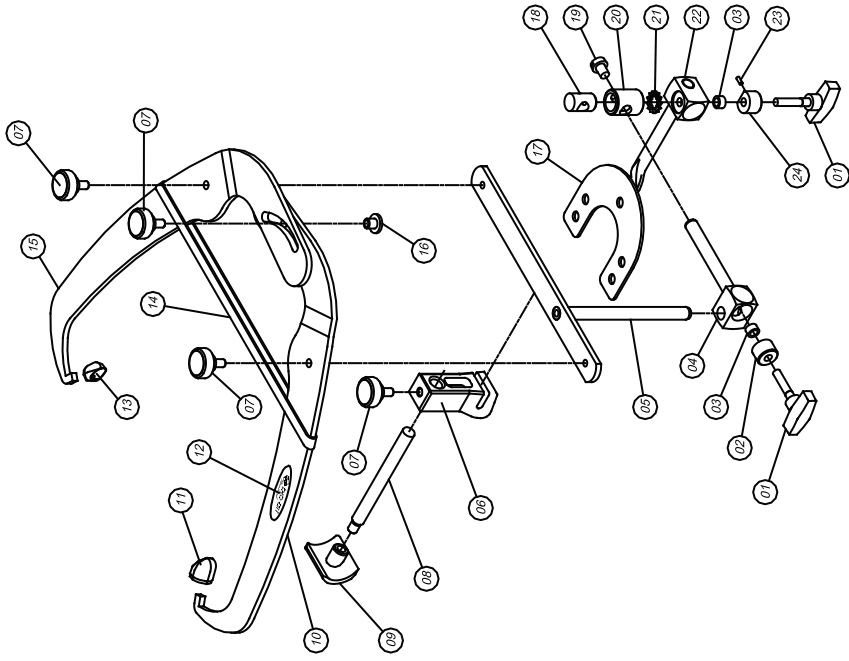
Item	Qtde	Código	Descrição do Componente
1	1	SCRE0078	FIXING SCREW FOR THE INCISAL TABLE
2	1	FRAM0731	A7 LOWER BRANCH
3	1	CMES1537	STANDARD INCISAL TABLE (POLYCARBONATE)
4	1	FPIN0053	INCISAL PIN
5	1	CTAP1098	RIGHT COLUMN FINISHING CAP
6	2	SCRE0094	LOCK PIN
7	2	FPIG0779	FACIAL ARCH GUIDE PIN
8	1	SRAM0080	A7 FIX UPPER BRANCH
9	1	CPIN1197	UPPER BRANCH SUPPORT PIN
10	1	CTAP1125	RIGHT MAGNET CAP
11	2	CIMA1111	A7 FIX STABILIZER MAGNET
12	1	CTAP1124	LEFT MAGNET CAP
13	2	CIMA1118	MOUNTING PLATE FIXING MAGNET
14	2	SPLA0079	RAIL ASSEMBLY PLATE
15	1	SCRE0011	FIXING SCREW FOR THE INCISAL PIN
16	2	CPAR1119	CONDYLAR ELEMENT LOCK SCREW
17	2	CORI1112	ORI-4 LOCK PIN O RING
18	2	FEGD0752	CONDYLAR ELEMENT
19	1	CTAP1097	LEFT COLUMN FINISHING CAP
20	1	FCAM0755	MAGNET HOUSING CUP
21	2	FPIG0076	MOUNTING PLATE GUIDE PIN
22	2	SCRE0082	FIXING SCREW FOR THE MOUNTING PLATE

### NOTE

\*THE STANDARDIZED ARTICULATORS ONLY COME WITH 1 SCREW.

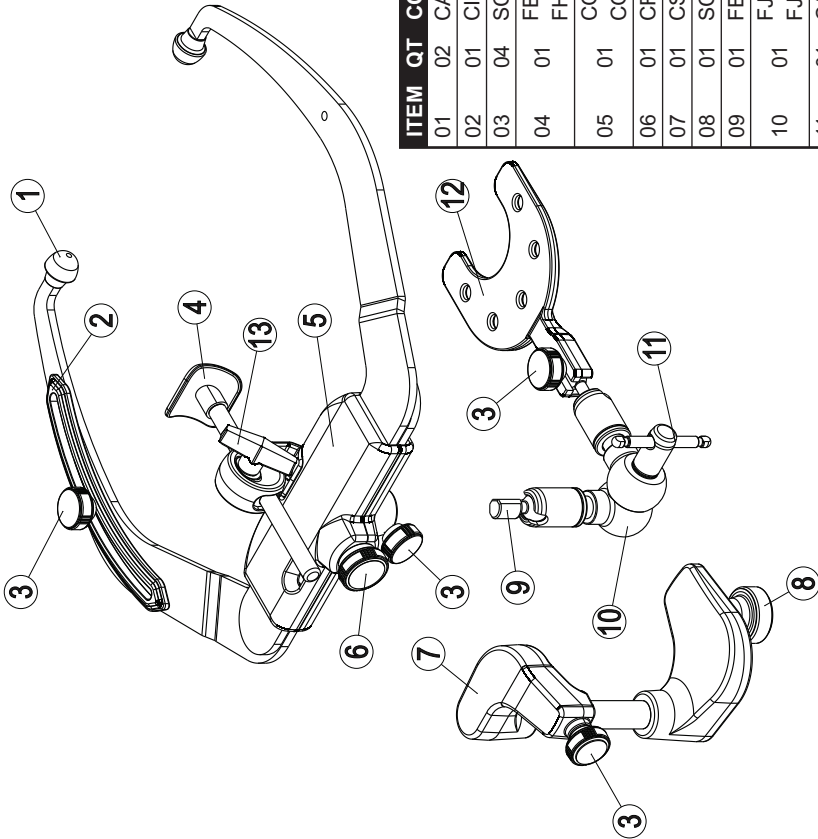
\*\*THE MAGNETIC PLATES ARE NOT COMPATIBLE WITH THE STANDARDIZED ARTICULATOR.

# 13 - STANDARD FACEBOW - PARTS LIST



ITEM	QT	CÓDIGO	DESCRIÇÃO
01	02	SBBL0001	JOINT BUTTERFLY NUT
02	01	FFIX0362	BEAM JOINT FASTENER (WITHOUT HOLE)
03	02	FMOL0025	JOINT RING
04	01	SEXP0006	MAIN AXIS OF THE ARCH
05	01	STAR0005	ARCH BEAM
06	01	FPNZ0020	NAZIUM RAPPORTEUR SUPPORT
07	04	SCRE0020	ARCH FIXING SCREW
08	01	FHST0018	NAZIUM RAPPORTEUR STEM
09	01	FBLO0016	NAZIUM RAPPORTEUR BLOCK
10	01	FARG0784	RIGHT ARCH (WITH HOLE)
11	01	FAUR0033	RIGHT AURICLE
12	01	CETQ0018	MODEL IDENTIFICATION TAG
13	01	FAUR0032	LEFT AURICLE
14	01	CELA0009	NATURAL ELASTIC
15	01	FARG0785	LEFT ARCH (WITH TEAR)
16	01	FPOR0039	STANDARD ARCH CENTER NUT
17	01	SGDE0007	DENTATE FORK
18	01	FBLO0008	MAIN SHAFT INTERNAL BLOCK
19	01	FTMP0027	LENTIL BUFFER
20	01	FBLO0006	MAIN SHAFT EXTERNAL BLOCK
21	01	CARR0004	DENTATE WASHER
22	01	FBLO0026	FORK FIXING BLOCK
23	01	CPIE0005	JOINT FIXING PIN
24	01	FFIX0022	FORK JOINT FASTENER (WITH HOLE)

## ► 14 - ELITE FACEBOW - PARTS LIST



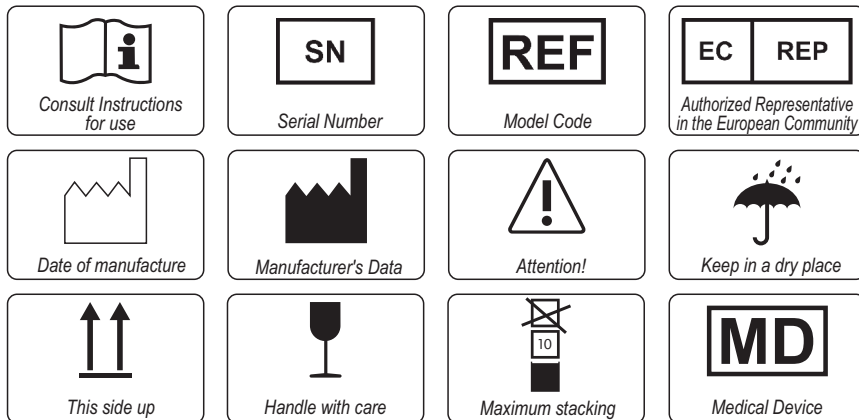
ITEM	QT	CÓDIGO	DESCRIÇÃO
01	02	CAUR1633	AURICLE
02	01	CINR1610	INFRA-ORBITAL INDICATOR
03	04	SCRE002	FIXING SCREW
04	01	FBL00016	NAZIUM RAPPORTEUR
		FHST1149	
05	01	CGUI1607	LOWER AND UPPER GUIDES
		CGUI1608	
06	01	CRLD1604	BRAKE LOCK SCREW
07	01	CSUP1609	TRANSFER SET SUPPORT
08	01	SCRE0002	FIXING SCREW (TRANSFER SET SUPPORT)
09	01	FEIX1101	TRANSFER SET TERMINAL
10	01	FJUN1092	FEMALE-MALE JOINT
		FJUN1093	
11	01	CALA1943	FIXING LEVER
12	01	CGRO1605	POLYMER DENTATE FORK (ELITE ARCH)
13	01	SCRE0020	NAZIUM SUPPORT BUTTERFLY NUT (ELITE ARCH)

## ► 15 - AUTHORIZED REPRESENTATIVE IN EUROPE ◀

### Obelis s.a

Boulevard Général Wahis 53  
1030 Brussels, BELGIUM  
Tel: +(32) 2. 732.59.54  
Fax: +(32) 2.732.60.03  
E-Mail : mail@obelis.net

## ► 16 - SYMBOLOGY ◀



### **BIO-ART EQUIPAMENTOS ODONTOLÓGICOS LTDA.**

Rua Teotônio Vilela, 120 - Jd. Tangará - 13568-000 - São Carlos - SP - Brasil  
Tel. (16) 3371-6502 - MS: 103682-4 - www.bioart.com.br - bioart@bioart.com.br  
facebook.com/bioartequipamentos - @bioart\_solucoes\_inteligentes