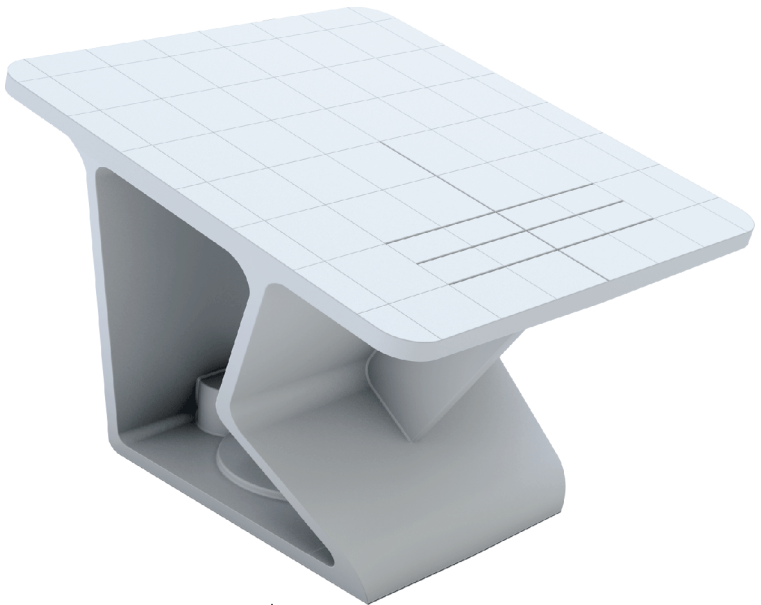


Camper's Table



INSTRUCTION MANUAL

Contents

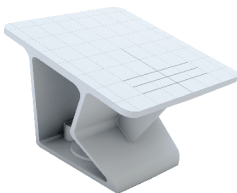
1-Introduction.....	01
2-Packaging contents.....	01
3-Installation.....	01
4-Instructions for use.....	01
5-Troubleshooting.....	02
6-Maintenance and cleaning.....	02
7-Technical specifications.....	03
8-Symbols.....	03
9-Warranty term and technical support.....	03
10-Authorized technical support.....	04
11-Authorized representative in Europe.....	04

1 Introduction

Thank you for choosing a Bio-Art product. The Camper's Table was designed to be used for standard mounting (12 degrees) of the upper cast on the articulator. Available in two models differing only in material. In the event of any serious incident occurring in relation to the device, the user and/or patient must notify Bio-Art Dental Equipment and the competent authority in their country.

2 Packaging Contents

01 Camper's Table
(anodized aluminum or
injected polymer)



01 Instruction manual

3 Installation

- The Camper's Table (aluminum) should be attached to the lower frame of the articulator with the fixing screw (knob) of the mounting plate;
- The Camper's Table (polymer-injected) can also be fixed to the lower frame with the magnet, as long as the articulator has the magnetic technology attaching the plates to the lower frame.

4 Instructions for use

The Camper's Table is a reference support used for fixing standard upper plaster cast at 12 degrees on the articulator, as shown in the figures:



Its surface at 12 degrees in relation to the lower frame is provided with reference lines (medium, lateral and lower) for the positioning and alignment of the plaster cast according to the technique used by the responsible professional.



Note: This manual contains only the basic and simplified information regarding the product, which does not replace proper course and training. The Camper's Table is a product intended for use only by specially qualified professionals in the area, who are fully responsible for the technique used.

5 Troubleshooting

PROBLEMS	POSSIBLE CAUSE	SOLUTION
Instability in attaching the Camper's Table to the Articulator.	Residues or dirt on the lower frame or on the surface of the Camper's Table.	Before securing the Camper's Table, always the clean contact surface and the lower frame of the Articulator.
Difficulty in tightening the locking screw.	Damaged threads in screw or table contact surface.	Replace the screw and/or please contact Bio-Art's authorized technical support.

6 Maintenance and cleaning

1. For cleaning, use only a clean cloth moistened with 70% alcohol and do not use solvents, detergents or chemicals, use only a slightly damp soft cloth;
2. Do not use metal or sharp objects to clean any part, if necessary use only a plastic spatula;
3. Do not exposure the Camper's Table to high temperatures, sunlight or excessive humidity.
4. For any maintenance, always seek Bio-Art's Authorized Technical Support.













7 Technical specifications

Polymer Camper's Table:..... Injected in PA + 30% Glass fiber
(SAE-420 stainless steel metallic insert).

MMetallic Camper's Table:..... Aluminum with anodized surface finish.

Table Angle:..... 12° degrees.

8 Symbols

 <i>See instructions for use</i>	 <i>Warning!</i>	 <i>Serial number</i>	 <i>Model code</i>
 <i>Authorized Representative in the European Community</i>	 <i>Date of manufacture</i>	 <i>Manufacturer</i>	 <i>Store in dry place</i>
 <i>This side up</i>	 <i>Fragile</i>	 <i>Maximum stacking</i>	 <i>Medical Device</i>

9 Warranty term and technical support

BIO-ART Equipamentos Odontológicos Ltda. grants a warranty of 1 (one) year for this product, counted from the date of purchase. This warranty covers any and all manufacturing defects and is provided by repairing the device subject to the following requirements:

- The product has been used properly, according to the instructions described in the instruction manual;
- The claim is accompanied by the respective Purchase Invoice and filed within the warranty period, followed by a report describing the defect and serial number of the product;
- The product is used, transported and stored with care;
- The cost for transportation (round trip) is borne by the customer.

Warranty limitations:

- Natural wear of parts;
- Misuse, dropping or accidents;
- Improper transport;
- Repair by unauthorized persons;
- Use in disregard of the characteristics and purposes of the product;
- Wear due to exposure to adverse conditions (humidity, cold and intense heat);
- Damage due to lack of cleaning or maintenance with improper products;

In case of further questions, please consult the manufacturer:



BIO-ART EQUIPAMENTOS ODONTOLÓGICOS LTDA
Rua Teotônio Vilela, 120 - Jardim Tangará
CEP 13568-000 - São Carlos - SP - Brasil
Tel. +55 (16) 3371-6502
CNPJ 58.538.372/0001-56 - Insc. Estadual 637.034.447.113
www.bioart.com.br

IO Authorized technical support

For your safety, the technical support for this product must be performed by authorized persons/companies. Find an Authorized Service Center on our website:

www.bioart.com.br

II Authorized representative in Europe



Obelis s.a.
Boulevard Général Wahis 53
1030 Brussels, BELGIUM
Tel: +(32) 2.732.59.54
Fax: +(32) 2.732.60.03
E-mail: mail@obelis.net



**Rua Teotônio Vilela, 120 - Jardim Tangará - CEP 13568-000
São Carlos (SP) - Brasil - Tel. +55 (16) 3371-6502
www.bioart.com.br - facebook.com/bioartequipamentos**
