

ProFace

with Magnifier

user guide



► **TABLE OF CONTENTS** ◀

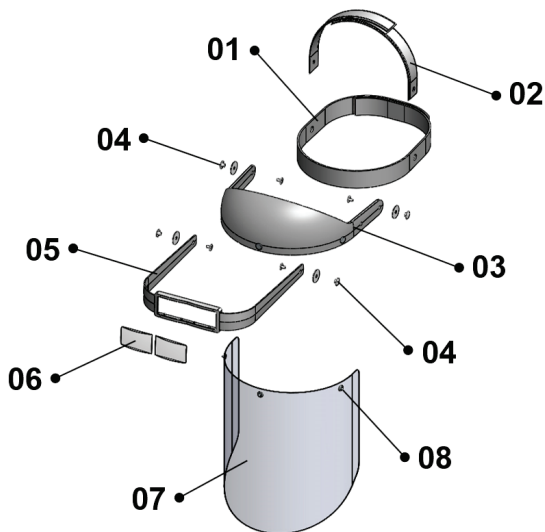
1. INTRODUCTION	1
2. TECHNICAL SPECIFICATIONS.....	2
3. PACKAGE CONTENT.....	2
4. USE INSTRUCTIONS.....	3
5. SAFETY PRECAUTIONS.....	4
6. MAINTENANCE AND CLEANING.....	4
7. SPECIAL STORAGE CONDITIONS.....	4
8. PROBLEMS AND SOLUTIONS.....	5
9. SYMBOLOGY.....	5
10. WARRANTY TERM AND TECHNICAL ASSISTANCE.....	6
11. AUTHORIZED REPRESENTATIVE IN EUROPE.....	6
12. AUTHORIZED TECHNICAL ASSISTANCE.....	6

► **1 - INTRODUCTION** ◀



The ProFace Bio-Art with Magnifier is an optical instrument developed to be used in the enlargement of images with the objective of facilitating the visualization and improving the performance of the professional in technical procedures, at the same time being an PPE (Personal Protective Equipment) for having a visor to protect the user's eyes and face from splash of saliva, liquids, aerosols, dust and particles in general. Its physical characteristics meet international quality standards: excellent visual performance, ergonomics, lightness, practicality, easy cleaning and maintenance (changing visors). In the event of any serious incident occurring in relation to the device, the user and/or patient must notify Bio-Art Dental Equipment and the competent authority in their country.

Before using ProFace with Bio-Art Magnifier, read the instructions contained in this guide.



- 01 – Fixing Strap
- 02 – Top Strap
- 03 – Forehead
- 04 – Fixing Rivets
- 05 – Lens Frame
- 06 – Lenses
- 07 – Protection Visor
- 08 – Visor Fixing Latch

► 2 - TECHNICAL SPECIFICATIONS ◀

Material

2.5x or 3.5x Lenses.....	CR-39
Lens Frame.....	ABS
Strap.....	SS strap coated with PVC film
Forehead.....	SS
Protection Visor.....	PETG
Strap Fastener.....	Velcro
Mobile Mechanism.....	Chrome-Plated Brass Rivets
Degrees of increase.....	2,5x ou 3,5x

Dimensions

(LxWxH) 31.0 x 19.0 x 30.0 cm

Package dimensions

(LxWxH) 19.0 x 11.0 x 27.0 cm

Weight

Without packaging 190g

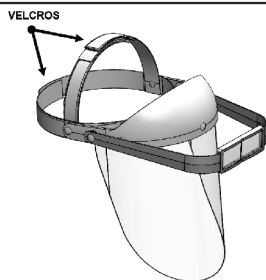
With packaging

► 3 - PACKAGE CONTENTS ◀

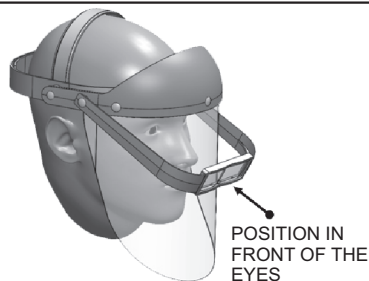
- 01 ProFace Facial Protector with Magnifier.
- 01 User Guide.

► 4 - USAGE INSTRUCTIONS ◀

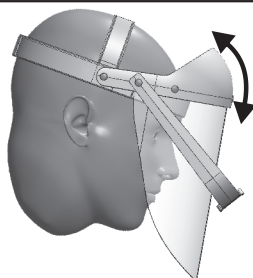
ProFace Bio-Art is an extremely simple tool to use. Release the Velcro straps (01 and 02) and adjust them on the head at the height of the forehead, fixing them again with the Velcro until the ProFace is safe and comfortable.



Then move the visor (07) vertically in front of the face and adjust the frame (05) so that the lenses (06) are positioned in front of the eyes. To adjust the focus, move the head closer or further away from the displayed object until the enlarged image is clear.



The moment you have your head down, if the visor (07) touches the chest, adjust it by pushing the visor (03) upwards.

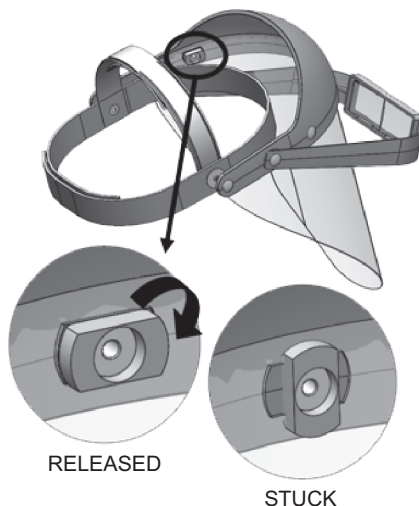


Note:

The focal length of the object in relation to the lenses to obtain an enlarged and sharp image is directly related to the degree of magnification of the lenses used in the magnifying glass.

The greater the degree of magnification of the magnifying glass, the closer the object should be positioned for an enlarged and sharp image.

To change the visor, rotate its three fixing buttons (08) to their horizontal position, leaving it free for the removal and/or placement of a new visor. After changing, rotate the three buttons (08) in the vertical position again to fix them.



► 5 - SAFETY PRECAUTIONS ◀



- This product is for personal and non-transferable use thus avoiding the possibility of cross, ophthalmic or dermatological contamination.
- As any other PPE, ProFace should only be used by people aware of its correct applications, limitations, inspection, cleaning, maintenance and storage;
- Using the magnifier, never direct your eyes against any source of intense light (ex: sun, reflectors, etc.), with risks of serious visual damage to the user;
- Do not remove the lenses from the frame, as this may damage the magnifier frame;
- In the event of damage to the lens, frame or moving parts of the magnifier, use only original Bio-Art parts purchased through authorized technical assistance, so the guarantee of the optical quality of the product will be preserved;
- The use of magnifiers should only be performed due to the requirement of the characteristics of certain works. Continuous and indiscriminate use can cause habit, so always consult your ophthalmologist in case your job requires prolonged use of some type of magnifier.

► 6 - MAINTENANCE AND CLEANING ◀



- Routine cleaning of ProFace should be done with paper tissues or soft tissue for optical use;
- When necessary, ProFace can be washed exclusively with water and a neutral detergent, and no other chemical products or sponges should be used.
- For disinfection use 70% alcohol in a small amount.

► 7 - SPECIAL STORAGE CONDITIONS ◀

- When not used, store the ProFace in a dry, dust-free place, away from chemicals, away from sources of excessive heat and sunlight and with the lenses protected with paper tissues or soft tissue for optical use;
- Whenever possible, keep ProFace in its original packaging.

► 8 - PROBLEMS AND SOLUTIONS ◀

PROBLEM	POSSIBLE CAUSE	SOLUTION/SUGGESTIONS
Vertical movements of the visor and/or frame with balance instability.	Incorrect handling. Attempting or removing the lenses from the frame.	Contact authorized service personnel. Note: Do not, under any circumstances, remove the lens from the frame.
Broken frame and/or forehead.	Incorrect handling. Attempting or removing the lenses from the frame.	Contact authorized service personnel. Note: Do not, under any circumstances, remove the lens from the frame.
Visor and/or lens scratches	Inadequate cleaning. Inadequate storage.	To avoid scratches on the visor and lenses, use paper tissues or soft tissue for optical cleaning. When not used, store the ProFace in a dry, dust-free place, away from chemicals, away from sources of excessive heat and sunlight and with the lenses protected with paper tissues or soft tissue for optical use. To change the lenses, contact the authorized technical assistance.
Yellow frame, forehead and/or straps	Action of ultraviolet rays.	To change the frame, forehead or strap, contact the authorized technical assistance. Note: Always keep ProFace away from sources of excessive heat or sunlight.

► 9 - SYMBOLS USED ON THE PRODUCT ◀



► 10 - WARRANTY TERM AND TECHNICAL ASSISTANCE ◀

BIO-ART Equipamentos Odontológicas Ltda. grants a six-month warranty from the date of purchase, covering any and all manufacturing defects and will be provided upon replacement of the product and subject to the following requirements:

- a) That the product has been transported, stored and used correctly in accordance with the instructions provided;
- b) That the complaint is accompanied by the purchase invoice and registered within the warranty period, followed by a report with the description of the defect and the manufacturing batch number;

Warranty Limitations:

- Natural wear of the lenses;
- Defects resulting from the incorrect use or storage of the product;
- Inadequate transportation;
- Use not in compliance with the characteristics and the purpose of the product;
- Damage due to exposure to adverse conditions (humidity, intense heat, chemical interaction, etc.);
- Cleaning and/or disinfection with unsuitable products.

To take advantage of this guarantee in the national market (Brazil), the consumer must send the product, at his costs, to the address below or to the nearest Authorized Bio-Art Technical Assistance. Consult about Authorized Technical Assistance points on our website: www.bioart.com.br.



BIO-ART EQUIPAMENTOS ODONTOLÓGICOS LTDA.

Rua Teotônio Vilela, 120 - Jardim Tangará - CEP 13568-000 - São Carlos - SP - Brasil
Tel. +55 (16) 3371-6502 - assistenciatecnica@bioart.com.br
CNPJ 58.538.372/0001-56 - Insc. Estadual 637.034.447.113

For other countries, the warranty is provided exclusively by the authorized distributor (legal importer).

► 11 - AUTHORIZED REPRESENTATIVE IN EUROPE ◀



Obelis s.a.

Boulevard Général Wahis 53 - 1030 Brussels, BELGIUM
Tel: +(32) 2.732.59.54 - Fax: +(32) 2.732.60.03
E-mail: mail@obelis.net

The information contained in this manual is subject to change without prior notice.

► 12 - AUTHORIZED TECHNICAL ASSISTANCE ◀

For your safety, this product should be serviced by authorized persons / companies. Check the Authorized Technical Assistance centers on our website: www.bioart.com.br



BIO-ART EQUIPAMENTOS ODONTOLÓGICOS LTDA.

📍 Rua Teotônio Vilela, 120 - Jardim
Tangará - CEP 13568-000
São Carlos - SP - Brasil

☎ (16) 3371-6502
🌐 www.bioart.com.br
📷 [bioart_solucoes_inteligentes](https://www.instagram.com/bioart_solucoes_inteligentes)